



**REQUEST FOR PROPOSAL FOR THE PURCHASE OF
TWO BOEING 737-400**

Prepared by:
SH&E, Inc.

October 5, 2009

TABLE OF CONTENTS

1. INTRODUCTION.....	2
REQUEST FOR PROPOSAL.....	2
2. BIDDER REQUIREMENTS.....	3
PROPOSAL / BIDDER REQUIREMENTS.....	3
3. 737-400 AIRCRAFT TECHNICAL SPECIFICATIONS	4
MAINTENANCE PROGRAM SUMMARY	4
MSN 24514 AVIONICS LISTING.....	5
MSN 24529 AVIONICS LISTING.....	6
INTERIOR CONFIGURATION.....	7
MSN 24514 SPECIFICATION AND MAINTENANCE STATUS	8
MSN 24529 SPECIFICATION AND MAINTENANCE STATUS	9
4. 737-400 CFM56-3C1 ENGINE Data	10
MSN 24514 Engine EGT Margins	10
MSN 24529 Engine EGT Margins	10
Engine Disk Sheets.....	10

1

INTRODUCTION¹

REQUEST FOR PROPOSAL

SH&E has been retained by Prudential Retirement Insurance and Annuity Company (“Prudential”), , as the exclusive remarketing agent for two 737-400 aircraft as listed below in Table I (the “Aircraft”).

TABLE I

Aircraft	Registration No.	MSN
737-400	N514PR	24514
737-400	N529PR	24529

The Aircraft were previously leased to KLM Royal Dutch Airlines (“KLM”) up until their return from lease in May and June of this year. The Aircraft both underwent C-checks by KLM immediately prior to their return to Prudential.

The Aircraft are currently in the Netherlands but will be ferried in early October to AeroTurbine in Goodyear, AZ for storage. The Aircraft records have been electronically scanned. The Aircraft and records are available for inspection upon request.

The Aircraft are being offered for sale or dry lease in a strictly “as-is, where-is” condition.

¹ The information contained in this document is subject to verification with the aircraft and engines records. No representation or warranty is made by SH&E as to the accuracy or completeness of the material set forth herein. The aircraft is offered for sale strictly “as is, where is”.

2

BIDDER REQUIREMENTS

PROPOSAL / BIDDER REQUIREMENTS

There is no set schedule for the bidding on these Aircraft. The Aircraft will remain on the market until an acceptable offer has been made and accepted by Prudential.

Any bids for purchase or lease should include the following:

1. Bidder's name
2. Proposed purchase price and/or lease rate
3. (If applicable) proposed lease terms and return conditions
4. Any special conditions including financing requirements, etc. to complete the transaction.

The above is subject to change at the sole discretion of Prudential.

Proposals should be submitted, preferably via email, to:

Gary Weissel
Vice President
SH&E, Inc.
2115 Township Dr
Woodstock, GA 30189
Email: gweissel@sh-e.com
Tel: 212-656-9234
Fax: 212-471-5934

3

737-400 AIRCRAFT TECHNICAL SPECIFICATIONS

MAINTENANCE PROGRAM SUMMARY²

Check	Interval
C – Check	18 mos/ 4,000 FH / 3,000 FC
D – Check	96 mos/ 24,000 FH
NLG	96 mos/ 2,920 Days
MLG – L	96 mos/ 2,920 Days
MLG - R	96 mos/ 2,920 Days
APU	5,000 APU Hours

² This is the Maintenance Program Intervals used by KLM during their operation of the Aircraft.

MSN 24514 AVIONICS LISTING

Aircraft is RVSM and 8.33 FM Immunity compliant

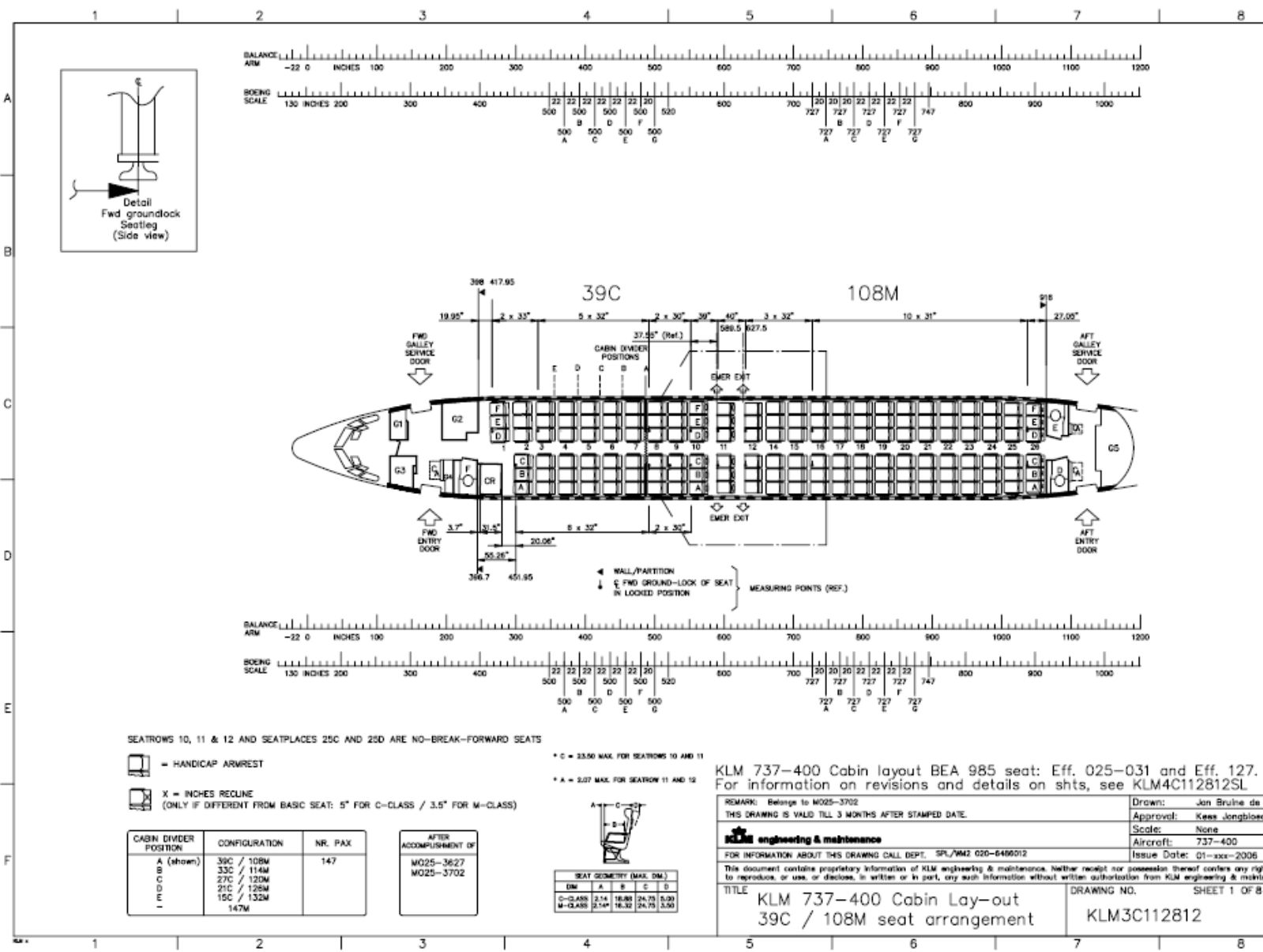
ITEM	QTY	MFGR	P/N	REMARKS
AUTOPILOT/FLIGHT DIRECTOR	-			Not Applicable
DIGITAL AIRDATA COMPUTER	2	Honeywell	HG480B43	
FLIGHT CONTROL COMPUTER	2	Honeywell	4051600-913	
FLIGHT MODE CONTROL PANEL	1	Honeywell	4051601-938	
AUTO THROTTLE COMPUTER	1	Smiths	7350UE10-12	
VHF COMM-PANEL	3	Gables	G7400-12	8.33 kHz capable - Yes
AUDIO SEL PANELS	3	Avtech	5145-1-44	
VHF TRANSCIEVER	3	Collins	822-1047-003	8.33 kHz capable - Yes
HF TRANSCIEVER	-			Not Installed
PSGR ADDRESS	1	Collins	622-4096-002	
COMM. MANG. UNIT (ACARS)	1	Honeywell	965-0759-001	VDL capable - No
COCKPIT VOICE RECORDER	1	L3 Communicator	2100-1020-00	
UNIVERSAL FLIGHT DATA REC.	1	Honeywell	980-4100DXUN	
CAWC	-			Not Installed
TCAS COMP	1	Honeywell	7517900-10004	Mode 7 - Yes
DME TRANSCIEVER	2	Collins	622-2921-006	
ADF RECIEVER	2	Collins	777-1492-005	
STANDBY HORIZON	1	Thales	H321AKM1	
MARKER/RECIEVER	1	Collins	522-2996-011	
WX RADAR TRANSCIEVER	1	Collins	622-5132-109	
WX RADAR/PREDICTIVE WINDSHEAR	-			Not Available
TRANSCIEVER RADIO ALTIMETER	2	Thales	9599-607-14931	
INTERNAL REF UNIT	2	Northrop Grumman	461800-02-08-116	
COMPUTER EGPWS	1	Honeywell	965-0976-003-222-222	Terrain Avoidance - Yes
EADI	2	Collins	622-7999-003 622-7999-013	
EHSI	2	Collins	622-7999-003 622-7999-013	
MACH A/B INDICATOR	-			Not Installed
IND ELECTRICAL ALTIMETER	2	Smiths	2057-01-1	
DIGITAL STALL WARNING COMPUTER	2	Boeing	65-52819-39	
INDICATOR STDBY ALT/AIRSPEED	1	Smiths	WL102AM83	
RADIO ALTIMETER	-			Not Installed
VHF NAV CONTROL PANEL	2	Cables	G7503-02	
RDDMI INDICATOR	2	Honeywell	4034559-908	
ATC MODE S TRANSPONDER	2	Honeywell	7517800-11006	
RA/T A IVSI	2	Honeywell	4057241-860	
FLT MANAGEMENT COMPUTER	1	Smiths	171497-05-01	
MULTI MODE RECIEVER	2	Collins	822-1236-001	FM Immunity - Yes
B-RNAV Capable		YES		
P-RNAV Capable		YES		
RVSM		YES		

MSN 24529 AVIONICS LISTING

Aircraft is RVSM and FM 8.33 compliant.

ITEM	QTY	MFGR	P/N	REMARKS
AUTOPILOT/FLIGHT DIRECTOR	-			Not Applicable
DIGITAL AIRDATA COMPUTER	2	Honeywell	HG480B43	
FLIGHT CONTROL COMPUTER	2	Honeywell	4051600-913	
FLIGHT MODE CONTROL PANEL	1	Honeywell	4051601-938	
AUTO THROTTLE COMPUTER	1	Smiths	7558UE2-4	
VHF COMM-PANEL	3	Gables	G7400-12	8.33 kHz capable - Yes
AUDIO SEL PANELS	3	Avtech	9145-1-44	
VHF TRANSCIEVER	3	Collins	822-1047-003	8.33 kHz capable - Yes
HF TRANSCIEVER	-			Not installed
PSGR ADDRESS	1	Collins	622-4096-002	
COMM. MANG. UNIT (ACARS)	1	Honeywell	965-0758-001	VDL capable - No
COCKPIT VOICE RECORDER	1	L3 Communicator	2100-1020-00	
UNIVERSAL FLIGHT DATA REC.	1	Honeywell	980-4100DXUN	
CAWC	-			Not installed
TCAS COMP	1	Honeywell	7517900-10004	Mode 7 - Yes
DME TRANSCIEVER	2	Collins	622-2921-006	
ADF RECIEVER	2	Collins	777-1492-005	
STANDBY HORIZON	1	Thales	H321AKM1	
MARKER/RECIEVER	1	Collins	522-2996-011	
WX RADAR TRANSCIEVER	1	Collins	622-5132-109	
WX RADAR/PREDICTIVE WINDSHEAR	-			Not Available
TRANSCIEVER RADIO ALTIMETER	2	Thales	9599-607-14931	
INTERNAL REF UNIT	2	Northrop Grumman	461800-02-08-116	
COMPUTER EGPWS	1	Honeywell	965-0976-003-222-222	Terrain Avoidance - Yes
EADI	2	Collins	622-7999-013	
EHSI	2	Collins	622-7999-003 622-7999-013	
MACH A/B INDICATOR	-			Not installed
IND ELECTRICAL ALTIMETER	2	Boeing	10-61826-8	
DIGITAL STALL WARNING COMPUTER	2	Boeing	65-52819-39	
INDICATOR STDBY ALT/AIRSPD	1	Smiths	WL102AM03	
RADIO ALTIMETER	-			Not installed
VHF NAV CONTROL PANEL	2	Gables	G7503-02	
RDDMI INDICATOR	2	Honeywell	4034559-908	
ATC MODE S TRANSPONDER	2	Honeywell	7517800-11006	
RA/TA IVSI	2	Honeywell	4067241-860	
FLT MANAGEMENT COMPUTER	1	Smiths	171497-05-01	
MULTI MODE RECIEVER	2	Collins	822-1236-001	FM Immunity - Yes
B-RNAV Capable		YES		
P-RNAV Capable		YES		
RVSM		YES		

INTERIOR CONFIGURATION



SEATROWS 10, 11 & 12 AND SEATPLACES 25C AND 25D ARE NO-BREAK-FORWARD SEATS

= HANDICAP ARMREST

X = INCHES RECLINE (ONLY IF DIFFERENT FROM BASIC SEAT: 5° FOR C-CLASS / 3.5° FOR M-CLASS)

* C = 33.50 MAX. FOR SEATROWS 10 AND 11

* A = 2.07 MAX. FOR SEATROW 11 AND 12



SEAT GEOMETRY (MAX. DIM.)				
DIM.	A	B	C	D
C-CLASS	21.4	18.88	24.75	5.39
M-CLASS	21.44	18.32	24.75	5.30

CABIN DIVIDER POSITION	CONFIGURATION	NR. PAX
A (shown)	39C / 108M	147
B	33C / 114M	
C	27C / 120M	
D	21C / 126M	
E	15C / 132M	
-	147M	

AFTER ACCOMPLISHMENT OF
MO25-3627
MO25-3702

KLM 737-400 Cabin layout BEA 985 seat: Eff. 025-031 and Eff. 127. For information on revisions and details on shts, see KLM4C112812SL

REMARK: Belongs to MO25-3702
THIS DRAWING IS VALID TILL 3 MONTHS AFTER STAMPED DATE.

KLM engineering & maintenance
FOR INFORMATION ABOUT THIS DRAWING CALL DEPT. SPL/WM2 020-6466012

This document contains proprietary information of KLM engineering & maintenance. Neither receipt nor possession thereof confers any right to reproduce, or use, or disclose, in written or in part, any such information without written authorization from KLM engineering & maintenance.

TITLE: KLM 737-400 Cabin Lay-out
39C / 108M seat arrangement

Drawn: Jan Bruine de Bruin
Approval: Kees Jongbloed
Scale: None
Aircraft: 737-400
Issue Date: 01-xxx-2006

DRAWING NO. KLM3C112812
SHEET 1 OF 8

MSN 24514 SPECIFICATION AND MAINTENANCE STATUS

General Information

Model: 737-406
Serial No: 24514
Line No: 1768
Current Registry: N514PR
Engine Model: CFM56-3C1
Installed ESN's: 727105 & 857845
Manufactured: 1989

Operational Weights

MTW: 150,500 lb
MTOW: 150,000 lb
MLW: 121,000 lb
MZFW: 113,000 lb

Configuration

Seating Capacity: 39C/108M
Galley Units: 4Fwd/1Aft
Lavatories: 1Fwd/2Aft
Previous Operator: KLM

Indicative Aircraft Performance:

Initial Cruising Altitude: 31,700 ft
Typical Range: 2,255 mi
Approx Max Range: 3,910 mi
Cruising Speed: 0.745 Mach
Approx Takeoff Dist: 7,730 ft
Approx Min Landing Dist: 5,550 ft

Aircraft Maintenance Status as of 3 May 2009:

Check	Interval	Time Since Last	Time Remaining
C – Check	18 mos/ 4,000 FH / 3,000 FC	0	18 mos
D – Check	96 mos/ 24,000 FH	2,396 Days	524 Days
NLG	96 mos/ 2,920 Days	446 Days	2,473 Days
MLG – L	96 mos/ 2,920 Days	446 Days	2,473 Days
MLG - R	96 mos/ 2,920 Days	446 Days	2,473 Days
APU	5,000 APU Hours	3,185 hrs	1,815 hrs

MSN 24529 SPECIFICATION AND MAINTENANCE STATUS

General Information

Model: 737-406
Serial No: 24529
Line No: 1770
Current Registry: N529PR
Engine Model: CFM56-3C1
Installed ESN's: 721588 & 721694
Manufactured: 1989
Total Flt Hours: 45,864
Total Cycles: 33,032

Operational Weights

MTW: 150,500 lb
MTOW: 150,000 lb
MLW: 121,000 lb
MZFW: 113,000 lb

Configuration

Seating Capacity: 39C/108M
Galley Units: 4Fwd/1Aft
Lavatories: 1Fwd/2Aft
Previous Operator: KLM

Indicative Aircraft Performance:

Initial Cruising Altitude: 31,700 ft
Typical Range: 2,255 mi
Approx Max Range: 3,910 mi
Cruising Speed: 0.745 Mach
Approx Takeoff Dist: 7,730 ft
Approx Min Landing Dist: 5,550 ft

Aircraft Maintenance Status as of 3 JUN 2009:

Check	Interval	Time Since Last	Time Remaining
C – Check	18 mos/ 4,000 FH / 3,000 FC	0	18 mos
D – Check	96 mos/ 2,920 Days	2,064 Days	856 Days
NLG	96 mos/ 2,920 Days	61 Days	2,859 Days
MLG – L	96 mos/ 2,920 Days	804 Days	2,116 Days
MLG - R	96 mos/ 2,920 Days	799 Days	2,121 Days
APU	5,000 APU Hours	2,093 hrs	2,907 hrs

4

737-400 CFM56-3C1 ENGINE DATA

The following are the EGT Margins as measured at return of the Aircraft from KLM to Prudential. Aircraft have not been operated since these measurements except for the ferry from the Netherlands to their storage locations

MSN 24514 ENGINE EGT MARGINS

ESN 727105 46°

ESN 857845 34°

MSN 24529 ENGINE EGT MARGINS

ESN 721588 52.6°

ESN 721694 51°

ENGINE DISK SHEETS

On the following pages

KLM ENGINE MODEL E S N TSLV TSN TSI CSLV CSN CSI
CFM56-3C1 727105 10120 42296 226 7393 23782 194
Report @ March 13, 2009

IIN	NOMENCLATURE	PART NUMBER	SERIAL NUMBER	TT	PTC			LLC			LRC			REMARKS
					PTC A	PTC B	PTC C	LLC A	LLC B	LLC C	LRC A	LRC B	LRC C	
211	SPOOL-BOOSTER	335-009-306-0	DC095447	10120	0	7393	0	30000	30000	30000	22,607	22,607	22,607	
213	DISK ASSY-FAN RTR STG 1	335-014-511-0	DC094911	10120	0	7393	0	30000	24900	20100	21,093	17,507	14,132	
221	SHAFT ASSY-FAN	335-006-414-0	DC330742	10120	0	7393	0	30000	30000	30000	22,607	22,607	22,607	
312	SHAFT-CPRSR ROTOR	1275M37P02	GWN07WN4	10120	0	7393	0	20000	20000	20000	12,607	12,607	12,607	
313	SPOOL-STAGES 1 AND 2	1589M66G02	GWN080K6	10120	0	7393	0	20000	20000	20000	12,607	12,607	12,607	
314	DISK-STAGE 3	1590M59P01	XAE77857	10120	0	7393	0	20000	20000	20000	12,607	12,607	12,607	
315	SPOOL ASSY-CPRSR RTR STG4-9	1588M89G03	GWN080TH	10120	0	7393	0	20000	20000	15800	12,607	12,607	9,960	
316	SEAL-ROTATING AIR REAR	1319M25P02	GFF5ARDH	10120	0	7393	0	20000	18000	15000	11,786	10,607	8,839	
521	SHAFT-HPT FRONT	1385M90P04	XAE64916	10120	0	7393	0	20000	17300	17000	11,453	9,907	9,735	
522	SEAL-ROTATING AIR HPT FRONT	1282M72P05	GWN07WAT	10120	0	7393	0	20000	15800	15100	10,642	8,407	8,035	
525	DISK-HPT ROTOR	1475M29P02	GWN07PK0	10120	0	7393	0	20000	18500	16600	12,008	11,107	9,966	
526	SHAFT-HPT REAR	1864M91P02	TMTTH430	10120	0	7393	0	25000	20000	15800	15,759	12,607	9,960	
542	DISK-LPT ROTOR STG 1	301-331-126-0	BC202522	10120	0	7393	0	25000	25000	25000	17,607	17,607	17,607	
543	DISK-LPT ROTOR STG 2	301-331-227-0	BC150669	10120	0	7393	0	25000	25000	25000	17,607	17,607	17,607	
544	DISK-LPT ROTOR STG 3	301-331-322-0	BC184089	10120	0	7393	0	25000	25000	25000	17,607	17,607	17,607	
545	DISK-LPT ROTOR STG 4	301-331-429-0	DC329865	10120	0	7393	0	25000	25000	25000	17,607	17,607	17,607	
546	SUPPORT-CONIC LPT RTR STG 3	305-056-116-0	BB999768	10120	0	7393	0	25000	25000	25000	17,607	17,607	17,607	
551	SHAFT-LPT	301-330-067-0	LA114726	10120	0	7393	0	30000	30000	30000	22,607	22,607	22,607	
552	SHAFT-STUB LPT	301-330-626-0	DC340540	10120	0	7393	0	25000	25000	25000	17,607	17,607	17,607	

LEGEND PART

PTC A = PART TOTAL CYCLES B1 PTC B = PART TOTAL CYCLES B2 PTC C = PART TOTAL CYCLES C1
 LLC A = LIFE LIMIT CYCLES B1 LLC B = LIFE LIMIT CYCLES B2 LLC C = LIFE LIMIT CYCLES C1
 LRC A = LIFE REMAINING CYCLES B1 LRC B = LIFE REMAINING CYLES B2 LRC C = LIFE REMAINING CYCLES C1
 PIT = PART TOTAL TIME

LEGEND ENGINE

TSLV / CSLV = HOURS / CYCLES SINCE SHOP VISIT
 TSN / CSN = HOURS / CYCLES SINCE NEW

KLM Engine Services
 Engine Administration



SIGNATURE:

[Handwritten Signature]
PBJ Greep
94175

KLM ENGINE MODEL E S N TSLV TSN TSI CSLV CSN CSI
CFM56-3C1 857845 7130 32599 7130 5428 23082 5428
Report @ March 13, 2009

IIN	NOMENCLATURE	PART NUMBER	SERIAL NUMBER	TT	PTC			LLC			LRC			REMARKS
					PTC A	PTC B	PTC C	LLC A	LLC B	LLC C	LRC A	LRC B	LRC C	
211	SPOOL-BOOSTER	335-009-306-0	BC454311	7130	0	5428	0	30000	30000	30000	24,572	24,572	24,572	
213	DISK ASSY-FAN RTR STG 1	335-014-511-0	DD086172	7130	0	5428	0	30000	24900	20100	23,460	19,472	15,718	
221	SHAFT ASSY-FAN	335-006-414-0	DD085696	7130	0	5428	0	30000	30000	30000	24,572	24,572	24,572	
312	SHAFT-CPRSR ROTOR	1275M37P02	GWN0A4HR	7130	0	5428	0	20000	20000	20000	14,572	14,572	14,572	
313	SPOOL-STAGES 1 AND 2	1589M66G02	GWN09TWT	7130	0	5428	0	20000	20000	20000	14,572	14,572	14,572	
314	DISK-STAGE 3	1590M59P01	XAEG0507	7130	0	5428	0	20000	20000	20000	14,572	14,572	14,572	
315	SPOOL ASSY-CPRSR RTR STG4-9	1588M89G03	GWN0A6NW	7130	0	5428	0	20000	20000	15800	14,572	14,572	11,512	
316	SEAL-ROTATING AIR REAR	1319M25P02	GFF5CMD3	7130	0	5428	0	20000	18000	15000	13,969	12,572	10,477	
521	SHAFT-HPT FRONT	1385M90P04	XAE78559	7130	0	5428	0	20000	17300	17000	13,725	11,872	11,666	
522	SEAL-ROTATING AIR HPT FRONT	1282M72P05	GWN0A68H	7130	0	5428	0	20000	15800	15100	13,129	10,372	9,912	
525	DISK-HPT ROTOR	1475M29P03	GWN0A587	7130	0	5428	0	20000	18500	16600	14,132	13,072	11,729	
526	SHAFT-HPT REAR	1864M91P02	TMTH866	7130	0	5428	0	25000	20000	15800	18,215	14,572	11,512	
542	DISK-LPT ROTOR STG 1	301-331-126-0	BC500838	7130	0	5428	0	25000	25000	25000	19,572	19,572	19,572	
543	DISK-LPT ROTOR STG 2	301-331-227-0	BC503338	7130	0	5428	0	25000	25000	25000	19,572	19,572	19,572	
544	DISK-LPT ROTOR STG 3	301-331-322-0	BC500710	7130	0	5428	0	25000	25000	25000	19,572	19,572	19,572	
545	DISK-LPT ROTOR STG 4	301-331-429-0	BC516119	7130	0	5428	0	25000	25000	25000	19,572	19,572	19,572	
546	SUPPORT-CONIC LPT RTR STG 3	305-056-116-0	DC903402	7130	0	5428	0	25000	25000	25000	19,572	19,572	19,572	
551	SHAFT-LPT	301-330-067-0	LA132063	7130	0	5428	0	30000	30000	30000	24,572	24,572	24,572	
552	SHAFT-STUB LPT	301-330-626-0	DC996742	7130	0	5428	0	25000	25000	25000	19,572	19,572	19,572	

LEGEND PART

PTC A = PART TOTAL CYCLES B1 PTC B = PART TOTAL CYCLES B2 PTC C = PART TOTAL CYCLES C1
 LLC A = LIFE LIMIT CYCLES B1 LLC B = LIFE LIMIT CYCLES B2 LLC C = LIFE LIMIT CYCLES C1
 LRC A = LIFE REMAINING CYCLES B1 LRC B = LIFE REMAINING CYLES B2 LRC C = LIFE REMAINING CYCLES C1
 PTT = PART TOTAL TIME

LEGEND ENGINE

TSLV / CSLV = HOURS / CYCLES SINCE SHOP VISIT
 TSN / CSN = HOURS / CYCLES SINCE NEW

KLM Engine Services
 Engine Administration



SIGNATURE:

[Handwritten Signature]
PBJ Greep
94175



LIFE LIMITED PARTS STATUS REPORT

CFM56-3

KLM ENGINE MODEL E S N TSLV TSN TSI CSLV CSN CSI
CFM56-3C1 721588 10040 47143 10040 7425 35142 7425
Report @ May 30, 2009

IIN	NOMENCLATURE	PART NUMBER	SERIAL NUMBER	TT	PTC			LLC			LRC			REMARKS
					PTC A	PTC B	PTC C	LLC A	LLC B	LLC C	LRC A	LRC B	LRC C	
211	SPOOL-BOOSTER	335-009-306-0	DC095052	10040	0	7425	0	30000	30000	30000	22,575	22,575	22,575	
213	DISK ASSY-FAN RTR STG 1	335-014-511-0	DC095125	10040	0	7425	0	30000	24900	20100	21,054	17,475	14,106	
221	SHAFT ASSY-FAN	335-006-414-0	DC549652	10040	0	7425	0	30000	30000	30000	22,575	22,575	22,575	
312	SHAFT-CPRSR ROTOR	1275M37P02	GWN08HF1	10040	0	7425	0	20000	20000	20000	12,575	12,575	12,575	
313	SPOOL-STAGES 1 AND 2	1589M66G02	GWN08HKK	10040	0	7425	0	20000	20000	20000	12,575	12,575	12,575	
314	DISK-STAGE 3	1590M59P01	XAEF2222	10040	0	7425	0	20000	20000	20000	12,575	12,575	12,575	
315	SPOOL ASSY-CPRSR RTR STG4-9	1588M89G03	GWN08DF9	10040	0	7425	0	20000	20000	15800	12,575	12,575	9,934	
316	SEAL-ROTATING AIR REAR	1319M25P02	GGF5C5KC	10040	0	7425	0	20000	18000	15000	11,750	10,575	8,813	
521	SHAFT-HPT FRONT	1385M90P04	XAE78034	10040	0	7425	0	20000	17300	17000	11,416	9,875	9,704	
522	SEAL-ROTATING AIR HPT FRONT	1282M72P05	GWN08CJN	10040	0	7425	0	20000	15800	15100	10,601	8,375	8,004	
525	DISK-HPT ROTOR	1475M29P02	GWN08D7K	10040	0	7425	0	20000	18500	16600	11,973	11,075	9,938	
526	SHAFT-HPT REAR	1864M91P02	TMTTH660	10040	0	7425	0	25000	20000	15800	15,719	12,575	9,934	
542	DISK-LPT ROTOR STG 1	301-331-126-0	BC277426	10040	0	7425	0	25000	25000	25000	17,575	17,575	17,575	
543	DISK-LPT ROTOR STG 2	301-331-227-0	BC256570	10040	0	7425	0	25000	25000	25000	17,575	17,575	17,575	
544	DISK-LPT ROTOR STG 3	301-331-322-0	BC290846	10040	0	7425	0	25000	25000	25000	17,575	17,575	17,575	
545	DISK-LPT ROTOR STG 4	301-331-429-0	DC549117	10040	0	7425	0	25000	25000	25000	17,575	17,575	17,575	
546	SUPPORT-CONIC LPT RTR STG 3	305-056-116-0	BB571168	10040	0	7425	0	25000	25000	25000	17,575	17,575	17,575	
551	SHAFT-LPT	301-330-067-0	LA118903	10040	0	7425	0	30000	30000	30000	22,575	22,575	22,575	
552	SHAFT-STUB LPT	301-330-626-0	BB907198	10040	0	7425	0	25000	25000	25000	17,575	17,575	17,575	

LEGEND PART

PTC A = PART TOTAL CYCLES B1 PTC B = PART TOTAL CYCLES B2 PTC C = PART TOTAL CYCLES C1
 LLC A = LIFE LIMIT CYCLES B1 LLC B = LIFE LIMIT CYCLES B2 LLC C = LIFE LIMIT CYCLES C1
 LRC A = LIFE REMAINING CYCLES B1 LRC B = LIFE REMAINING CYLES B2 LRC C = LIFE REMAINING CYCLES C1
 P.B.J. Greep

LEGEND ENGINE

TSLV / CSLV = HOURS / CYCLES SINCE SHOP VISIT
 TSN / CSN = HOURS / CYCLES SINCE NEW

Engine Administration
 Poolmanagement

SIGNATURE:

Page 1 of 1



LIFE LIMITED PARTS STATUS REPORT

CFM56-3

KLM ENGINE MODEL E S N TSLV TSN TSI CSLV CSN CSI
CFM56-3C1 721694 8973 47535 8973 6681 35219 6681
Report @ May 30, 2009

IIN	NOMENCLATURE	PART NUMBER	SERIAL NUMBER	TT	PTC			LLC			LRC			REMARKS
					PTC A	PTC B	PTC C	LLC A	LLC B	LLC C	LRC A	LRC B	LRC C	
211	SPOOL-BOOSTER	335-009-306-0	DC902679	8973	0	6681	0	30000	30000	30000	23,319	23,319	23,319	
213	DISK ASSY-FAN RTR STG 1	335-014-511-0	DC778272	8973	0	6681	0	30000	24900	20100	21,951	18,219	14,707	
221	SHAFT ASSY-FAN	335-006-414-0	DC903045	8973	0	6681	0	30000	30000	30000	23,319	23,319	23,319	
312	SHAFT-CPRSR ROTOR	1275M37P02	GWN098G9	8973	0	6681	0	20000	20000	20000	13,319	13,319	13,319	
313	SPOOL-STAGES 1 AND 2	1589M66G02	GWN0982L	8973	0	6681	0	20000	20000	20000	13,319	13,319	13,319	
314	DISK-STAGE 3	1590M59P01	XAEF2606	8973	0	6681	0	20000	20000	20000	13,319	13,319	13,319	
315	SPOOL ASSY-CPRSR RTR STG4-9	1588M89G03	GWN097WP	8973	0	6681	0	20000	20000	15800	13,319	13,319	10,522	
316	SEAL-ROTATING AIR REAR	1319M25P02	GFF5CDDM	8973	0	6681	0	20000	18000	15000	12,577	11,319	9,433	
521	SHAFT-HPT FRONT	1385M90P04	XAE64144	8973	0	6681	0	20000	17300	17000	12,276	10,619	10,435	
522	SEAL-ROTATING AIR HPT FRONT	1282M72P05	GWN096W8	8973	0	6681	0	20000	15800	15100	11,543	9,119	8,715	
525	DISK-HPT ROTOR	1475M29P03	GWN0945W	8973	0	6681	0	20000	18500	16600	12,777	11,819	10,605	
526	SHAFT-HPT REAR	1864M91P02	DED83021	8973	0	6681	0	25000	20000	15800	16,649	13,319	10,522	
542	DISK-LPT ROTOR STG 1	301-331-126-0	DA480855	23896	0	16218	0	25000	25000	25000	8,782	8,782	8,782	
543	DISK-LPT ROTOR STG 2	301-331-227-0	BA516853	23896	0	16218	0	25000	25000	25000	8,782	8,782	8,782	
544	DISK-LPT ROTOR STG 3	301-331-322-0	BA719399	23896	0	16218	0	25000	25000	25000	8,782	8,782	8,782	
545	DISK-LPT ROTOR STG 4	301-331-427-0	BA467744	23896	0	16218	0	25000	25000	25000	8,782	8,782	8,782	
546	SUPPORT-CONIC LPT RTR STG 3	305-056-116-0	BA828086	23896	0	16218	0	25000	25000	25000	8,782	8,782	8,782	
551	SHAFT-LPT	301-330-067-0	LA122224	8973	0	6681	0	30000	30000	30000	23,319	23,319	23,319	
552	SHAFT-STUB LPT	301-330-626-0	DA052755	23896	0	16218	0	25000	25000	25000	8,782	8,782	8,782	

LEGEND PART

PTC A = PART TOTAL CYCLES B1 PTC B = PART TOTAL CYCLES B2 PTC C = PART TOTAL CYCLES C1
 LLC A = LIFE LIMIT CYCLES B1 LLC B = LIFE LIMIT CYCLES B2 LLC C = LIFE LIMIT CYCLES C1
 LRC A = LIFE REMAINING CYCLES B1 LRC B = LIFE REMAINING CYLES B2 LRC C = LIFE REMAINING CYCLES C1
 PTT = PART TOTAL TIME

LEGEND ENGINE

TSLV / CSLV = HOURS / CYCLES SINCE SHOP VISIT
 TSN / CSN = HOURS / CYCLES SINCE NEW

KLM Engine Services
 Poolmanagement

SIGNATURE:

Page 1 of 1